



## *Cosmo Collection* **HALLEY**

**(J86)** 67" x 31" x 27"

APPROX. OPERATING GALLONS: 65

AIR INJECTORS: 33

### GENERAL

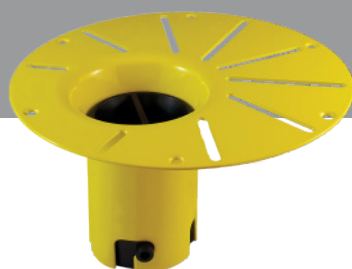
- High-gloss, High-impact, UV-resistant acrylic will not dull or fade
- Leveling feet
- White integrated linear waste & overflow

### SYSTEM

- Seamless air injectors around tub perimeter
- Highly variable speed blower motor with 600 watt heater:  
115 Volt - 10 Amps - 1 HP
- Blower must be remote mounted at installation
- Electronic keypad control with variable speeds and  
3 settings - Pulse, Wave, or Continuous

### COLORS AVAILABLE

White



### COSMO ABOVE FLOOR DRAIN KIT

- Freestanding tub rough-in
- Install before tile
- Designed to be installed in a  
8" to 10" joist space
- Can be installed with  
waterproof membrane

Sold separately.  
Not required for tub install

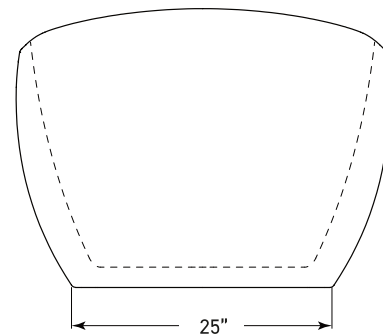
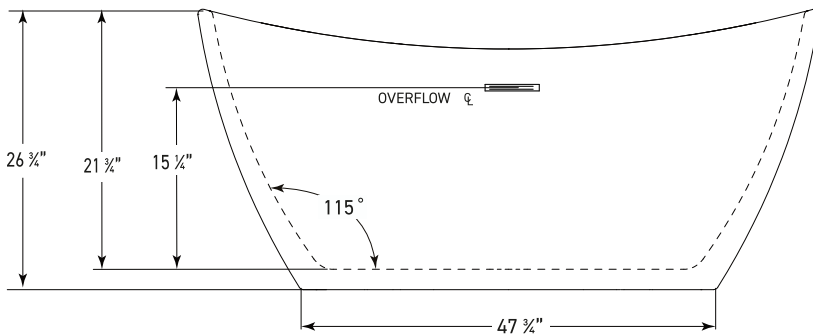
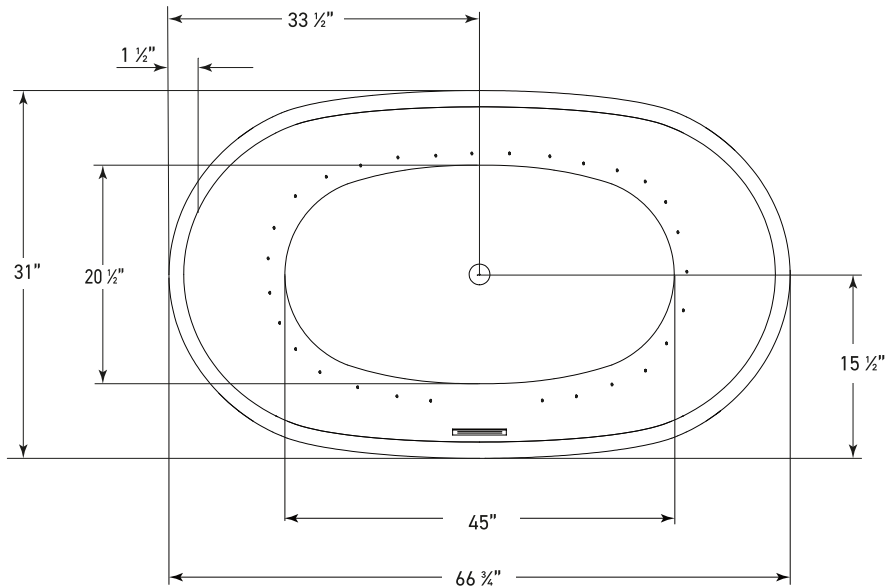
FOR INFORMATION OR  
TO PLACE AN ORDER  
CALL 1.800.288.7771

  
JETTACORP.COM

# TECHNICAL SPECIFICATIONS

## HALLEY J86

67" x 31" x 27" OVAL AIR



### ELECTRICAL SPECIFICATIONS

Required Electrical Service 110/115 Volts  
Standard Air 20 amp GFI

Each blower must be protected by a dedicated GFI breaker (refer to local codes).  
Cannot be more than 15 ft from the tub.

### CODES/STANDARDS APPLICABLE

Specific model meets or exceeds the requirements for the following standards: ANSI, ASME



**BLOWER MUST BE  
REMOTE MOUNTED**



# JETTA

JETTACORP.COM

### INSTALLATION: Measure tub before installing.

Dimensional variance on drawings may be +/- 1/2 inch and are subject to change without notice

© 2023 Jetta Corporation. All rights reserved.  
Specifications are subject to change without notice.  
REV 07/2023