

Affinity Collection

J56

72"x 36"x 21"

END DRAIN



RIVERCOMBO
HYDROTHERAPY



JETTA



PORTER

72"x 36"x 21" - RECTANGLE (1 PERSON)

Fitting into the space of a standard bath, this model is a convenient and economical option for your bath projects.

FEATURES

- High-gloss/high-impact, UV-resistant acrylic will not dull or fade
- Installation: Drop-in
- Minimalist tub profile with a self leveling rim
- 1 person bathing well
- 2.9 amp pump
- 10 River Jets - 4 Foot Jets, 6 Side Jets
- Seamless air injectors around tub perimeter.
- Variable speed air blower available - 115 Volt, 6.3 Amps, 1 HP
- Ambient air induction, with multi-function push button air switch
- Automatic purge cycle keeps lines clean and dry

OPTIONS AVAILABLE

- Roll-up Gel Spa Pillow
- Contoured Seat Cushion

COLORS AVAILABLE

White

WARRANTY

Lifetime Limited

MINIMUM OPERATING GALLONS - 51 gal.

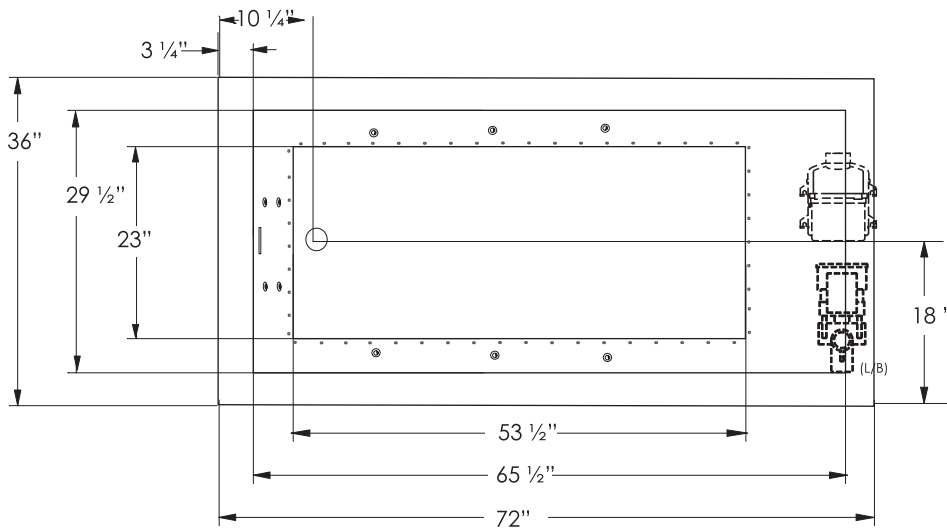
MAXIMUM OPERATING GALLONS - 102 gal.

J56

Affinity Collection

PORTER

RIVER COMBO HYDROTHERAPY | 72" x 36" x 21" | RECTANGLE (1 PERSON)



ELECTRICAL SPECIFICATIONS

Required Electrical Service	110/115 Volts
River Pump	20 amp GFI
Air Blower	20 Amp GFI

Each pump or blower must be protected by a dedicated GFI breaker (refer to local codes).

CODES/STANDARDS APPLICABLE

Specific model meets or exceeds the requirements for the following standards: ANSI, ASME

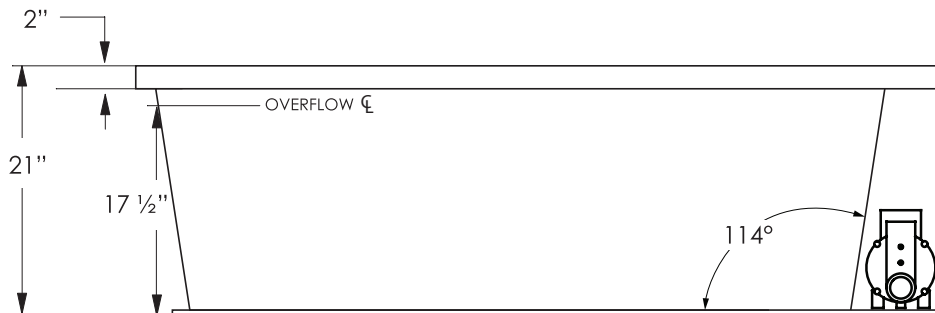
SUGGESTED PUMP ACCESS PANEL

Suggested access size 20" x 12"
Actual size may vary depending on distance of access to pump location.

DROP-IN CUT OUT DIMENSIONS

Subtract 1" from length and width dimensions
Actual cut out dimension 71" x 35"

SHIPPING WEIGHT 165 lbs



INSTALLATION: MEASURE TUB BEFORE BUILDING TUB DECK.

For best results, Jetta Corporation recommends 1"-3" of mortar bedding under the tub base for maximum support. Drawing shows manufacturer's standard pump location(s). Contact Jetta for details. Dimensional variance on drawings may be +/- 1/2 inch and are subject to change without notice.

JETTACORP.COM



© 2021 Jetta Corporation. All rights reserved. Specifications are subject to change without notice. REV 12/2021

TECHNICAL SPECIFICATIONS