



60" x 60" x 22"

Abacus (E11)

A contoured seat accents this stylish two-person corner bath with integral neck support.

Features:

- 6 directional jets including:
 - 2 back jets
 - 4 hip jets
- High gloss / high impact acrylic
- On/Off air switch for safety and convenience
- Safety suction
- Sculpted armrests
- Lumbar back support
- Slip resistant bottom
- 1 B.H.P. pump - 5.5 Amps
- Self-leveling rim
- Multiple pump positions
- UL and IAPMO listed, factory tested
- 1-year limited factory warranty

Models:

- Whirlpool Air Soaker



Options:

- Contoured neck support pillow
- Bath waste & overflows
- ABS tile flange

Colors:

- White and Biscuit

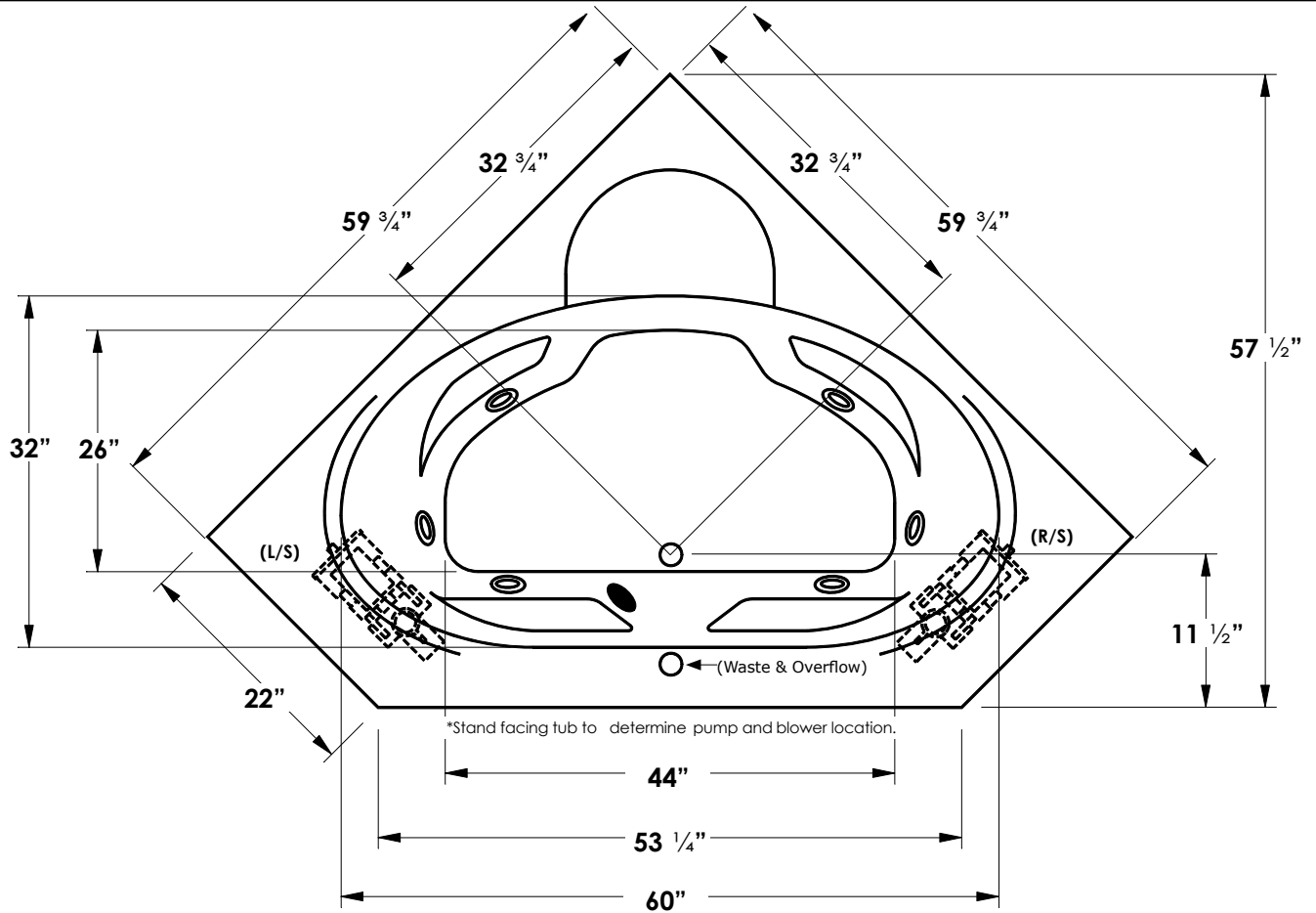
Operating Gallons (approx.):

- Regular Usage - 45 gal.

E11

60" x 60" x 22"

Jetta Corporation Technical Specifications



Electrical Specifications:

Required Electrical Service Standard 110/115 Volts
 Whirlpool 20 amp GFI
 Air Bath 20 amp GFI
 Pump or blower must be protected by a dedicated GFI breaker (refer to local codes).

Codes/Standards Applicable:

Specified model meets or exceeds the requirements for the following standards:
 UL Listed, ANSI, ASME, IAPMO

Suggested Pump/Blower Access Panel:

Suggested access size 20" x 12".
 Actual size may vary depending on distance of access to pump or blower location.

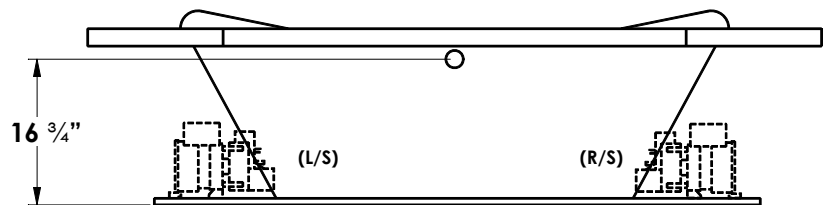
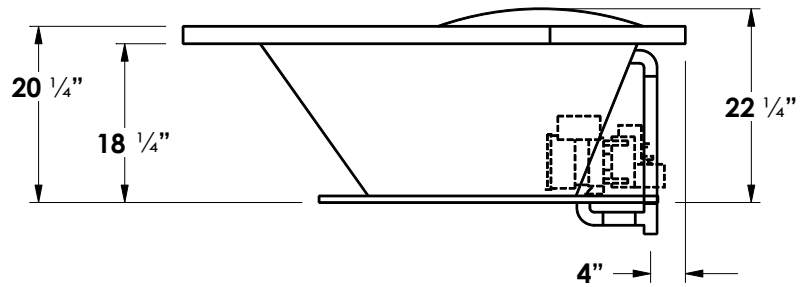
Drop-In Cut Out Dimension:

Subtract 1" from width and length dimensions.

Shipping Weight: 290 lbs.



*L/S, R/S pump position determines suction location.



Installation: Measure tub before building tub deck. For best results, Jetta Corporation recommends 1"-3" of mortar bedding under the tub base for maximum support. Dimensional variance on drawings may be +/- 1/2 inch and are subject to change without notice.



© 2020 Jetta Corporation. All rights reserved. Specifications are subject to change without notice. REV 07/2020